

**WHAT IS THE DIFFERENCE
BETWEEN A TSUNAMI WATCH,
TSUNAMI WARNING AND
URGENT TSUNAMI WARNING?**

PTWC— PACIFIC TSUNAMI WARNING CENTER

TSUNAMI WATCH:

Announced by the PTWC when the magnitude and source area of an earthquake are considered significant but the center is unable to verify that a tsunami has been generated.

A TSUNAMI WATCH means prepare.

TSUNAMI WARNING:

Announced by the PTWC when tsunami waves have been confirmed and a threat to life and property exists. *A TSUNAMI WARNING MEANS Immediate action in coastal areas is required.*

URGENT TSUNAMI WARNING:

Announced by the PTWC when a significant earthquake occurs within or close to the Hawaiian Islands.

A URGENT TSUNAMI WARNING MEANS URGENT VERTICAL OR HORIZONTAL EVACUATION OF EVACUATION ZONES IS REQUIRED.

**US Dept of Commerce / NOAA / NWS
Pacific Tsunami Warning Center
91-270 Fort Weaver Rd
Ewa Beach, HI 96706-2928 USA
1-808-689-8207**

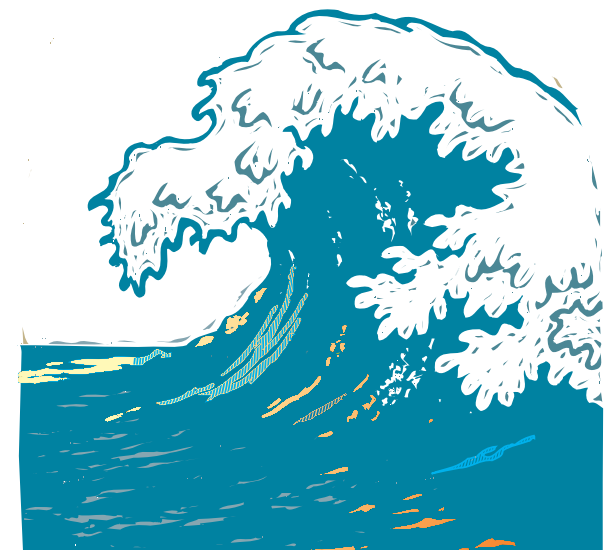
**International Tsunami Information Center
<http://itic.ioc-unesco.org/>**

**Local Radio Station KSSK 59.0 AM or 92.3 FM
for up to date information during emergencies.**

**Bellows Air Force Station
220 Tinker Road
Waimanalo, Hawaii 96795
808-259-8080**

Bellows Air Force Station

**Tsunami
Evacuation
Information
&
Directions to
Evacuation Center**



TSUNAMI EVACUATION INFORMATION & DIRECTIONS TO EVACUATION CENTER

HOW WILL I KNOW IF A TSUNAMI IS EXPECTED?

If you feel an earthquake that causes you to fall or hold on to something to keep yourself from falling,

THIS IS A NATURAL TSUNAMI WARNING!

IF YOU ARE OUTDOORS

remain in open areas away from tall trees, poles or buildings.

IF YOU ARE INDOORS

remain indoors and take cover.

IN EITHER EVENT- **WHEN THE SHAKING STOPS, IMMEDIATELY LEAVE** and **proceed to HIGHER GROUNDS!**

there may be no time for an official warning.

If a significant earthquake occurs in the vicinity of the Hawaiian Islands, the Pacific Tsunami Warning Center (PTWC) will issue an URGENT TSUNAMI WARNING for those islands which could be affected by a tsunami. The warning will be announced over the radio through the Emergency Broadcast System in conjunction with the sounding of Civil Defense sirens.



EXIT BELLOWS AFS ON TINKER ROAD AND PROCEED TO THE MAIN GATE

1. **TURN RIGHT** ON KALANIANAOLE HWY (HI-72) GO 0.71.2 MI.
2. **TURN LEFT** AT POALIMA STREET (2nd traffic light, location of the 76 gas station and Jack in the Box). GO 0.10.2 MI AND BEAR LEFT ON HIHIMANU STREET, GO 0.61.0 MI.
3. **TURN LEFT** AT 41-415 HIHIMANU STREET, ARRIVE AT WAIMANALO DISTRICT PARK.

WAIMANALO DISTRICT PARK

41-415 HIHIMANU STREET

WAIMANALO, HAWAII 96795 (PHONE: 808-259-8926)